

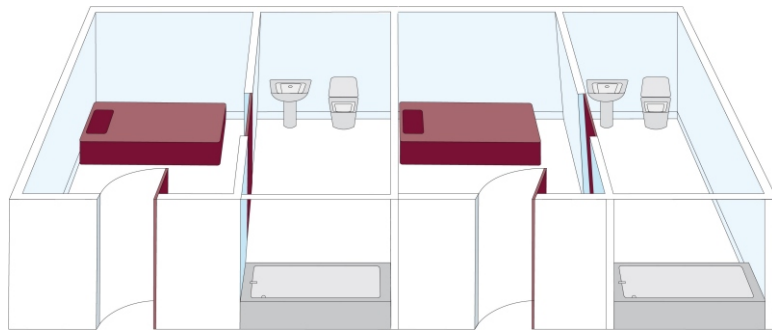
# Shared Bathroom Solution ●●●●

## **The Usual Approach**

It is usual to provide one facility per requirement. For example one bathroom per bedroom in a residential or nursing home, or a disabled access toilet for each of two areas of a building such as public side and airside of an airport.

Another approach is to employ staff to supervise the use of a single toilet shared between public and private areas.

There is always a cost element involved, either in the capital cost of building two facilities or the ongoing supervisory costs. For a typical bathroom this could run into many thousands of pounds.



- Shares a bathroom, disabled toilet or any room between 2 or 3 rooms / areas
- Maintains security between rooms
- Ensures privacy
- Visual indication of status
- Incorporated BS8300 compliant assistance alarm
- Audio visual reassurance for assistance alarm
- Automatically releases door for assistance
- Reduction in building costs
- Auto call for assistance after extended occupancy time
- Legitimate extended occupancy function
- Assistance called if door left open preventing second user from using
- Control of bathroom light (optional)
- Facility fault monitoring (optional)
- Third entrance door option available soon!

## **The Shared Facility**

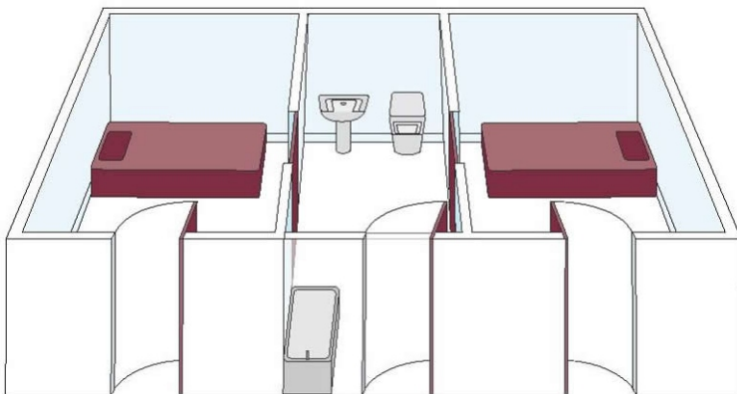
By using just one facility with two or even three entrance doors it is immediately obvious that there is an enormous space saving. Clearly it is not practical to ask users to lock and un-lock doors to maintain their privacy and subsequently to allow others to have access to the facility.

By sharing a single facility between two rooms or areas there is an immediate space saving of 50% which can then be given over to other uses. In a typical residential home with ten bedrooms of 9 sqm plus en-suite facilities of 8 sqm\* it is possible to construct an extra three bedrooms on the space saved. There are further cost savings on the plumbing and sanitary ware.

This scenario occurs in numerous situations including, bathrooms in nursing homes and hospitals, and disabled toilet facilities within buildings such as cinemas, theatres, schools etc, where public and private access may be required.

## **The Solution**

The Shared Bathroom Solution is a cost effective way allowing two or three doors to be controlled and interlocked to maintain privacy and to ensure that the facility is available for use by either groups of users immediately after use. The IGSCF controller along with the peripheral equipment also ensure that security cannot be breached. It is just not possible to pass through from one area to the other no matter what the circumstances. Users can only return to the area from which they came. Comprehensive features include assistance call, anti-hogging alert, and optional alerts for running water and consumables.



There are minimum standards for disabled toilets regarding the size of entrance and the space needed for manoeuvring a wheelchair through 180 degrees. There is also a recommended minimum of 700mm to allow a wheelchair user to slide from chair to toilet. The exact design and layout will depend upon local circumstances and any system should be considered with the architect at the design stage.



**Hoyles Electronic Developments Ltd**

T. 01744 886600

F. 01744 886607

E. sales@hoyles.com

W. www.hoyles.com

# IGSFC functional specification ●●●●

The IGSFC controller, controls the function of a shared bathroom by;

Preventing the bathroom being used as a passage from one room to the other, as the door that you enter by must be exited by.

Allowing privacy while in the bathroom (you can lock your door having entered).

Call for assistance if required.

Unlock the door automatically to allow the assistance to access the bathroom.

Prevent one person from 'Hogging' the bathroom, by generating an assistance call if the door is left open for 10 minutes or more, and generating an assistance call if the bathroom is occupied for longer than 20 minutes. This has the added benefit of calling for assistance if the occupant is unable to use the pull cord due to incapacitating medical problems.

(If there is a genuine need to have a door open for longer than 10 minutes, or have the bathroom occupied for longer than 20 minutes, the legitimate extended occupancy function can be used).

Indicate the status of the bathroom visually.

Indicate the assistance alarm audibly and visually.

Allowing the system to be disabled (locked down) using a key switch.

Generating a fault alarm, for running water, or toilet paper / soap level monitoring. If the input is present for longer than 5 minutes continuously, then an assistance call is generated. (Optional)

Controlling the light within the bathroom. (Optional)

## Comprehensive kit ●●●●

Part number IGSFKIT is a kit which includes all of the components necessary, excluding cable, to establish a fully working system. The contents of the kit are:

1 x IGSFC controller complete with battery backup

2 x Unlock button with LED status indication (S1720SX)

2 x Lock / Unlock button with LED status indication (S1720SI)

1 x Reset button (S1708S)

1 x Pull cord (S1600)

2 x Over door indicator / sounder (S1778SR)

1 x Remote assistance indicator with silence button (S1703PR)

1 x Key switch for system disable (S1709S)

1 x Presence Sensor (HR100)

2 x Mini magnetic door locks

2 x Standard surface mount door contact (DCS/INT)

2 x Emergency door release units (RP-GS-02)

Installation and User instructions

Please note that this kit will be suitable for most installations, however some installations may require further equipment. Please discuss your requirements with our technical team before ordering.