

Gemini GX32

The **GX32** fire alarm system is the most advanced of its type available. It uses PIC microprocessor technology in both the control panel and in each call point. The GX32 is designed in such a way that even if the cables are cut or short circuited in several places the system will continue to function. Each call point is individually battery powered and contains its own high power piezo sounder. A unique trace mode enables cable faults and battery problems to be pinpointed at the throw of a key.

Installation Considerations.

BS5839 recommends that *manual call points should be located on exit routes and in particular on floor landings of stairways and at exits to the open air. They should be so located that, to give an alarm, no person in the premises need travel more than 30 metres.*

BS5839 recommends a *minimum sound level of either 65db(A) or 5db(A) above any other noise likely to persist for longer than 30 seconds should be produced by the sounders in all accessible parts of the building.*

GX32 system sounders give a sound level of at least 100db(A) at 1 metre to ensure that almost 70db(A) is available at 30m distance to meet the above dual recommendations. GEMINI fire alarms are the ideal choice for fire alarms in small buildings and temporary accommodation etc... Up to 32 Callpoint/Sounder units can be connected to the control.

- Integral Call Point, Battery and Sounder
- Battery Fault Monitor
- Keyswitch to Silence & Restart Alarm
- Twin LED Fire Indication
- LED Fault Indication
- Simple to install
- System Healthy LED
- Smoke Alarm Option
- Robust Construction
- Fault Trace Facility
- Two wire connection

GX32 is available in kit form:-

GX32KIT400

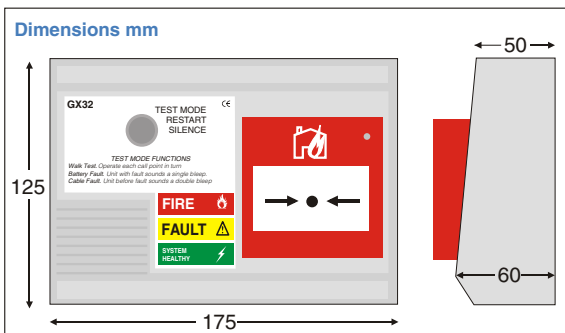
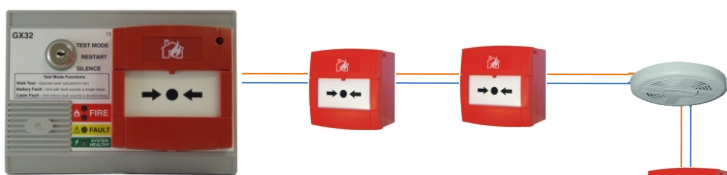
1 x GX32CIE Control Panel
4 x GX32MCP Manual Callpoint/Sounder units
140m Twin red inter-connecting cable.

GX32KIT402

1 x GX32CIE Control Panel.
4 x GX32MCP Manual Callpoint/Sounder units.
2 x GX32SMi Battery powered smoke alarms.
140m Twin red inter-connecting cable.



Fixings clips, screws and batteries etc. . . are included in all kits.



Hoyles Electronic Developments Ltd

T. 01744 886600

F. 01744 886607

E. sales@hoyles.com

W. www.hoyles.com