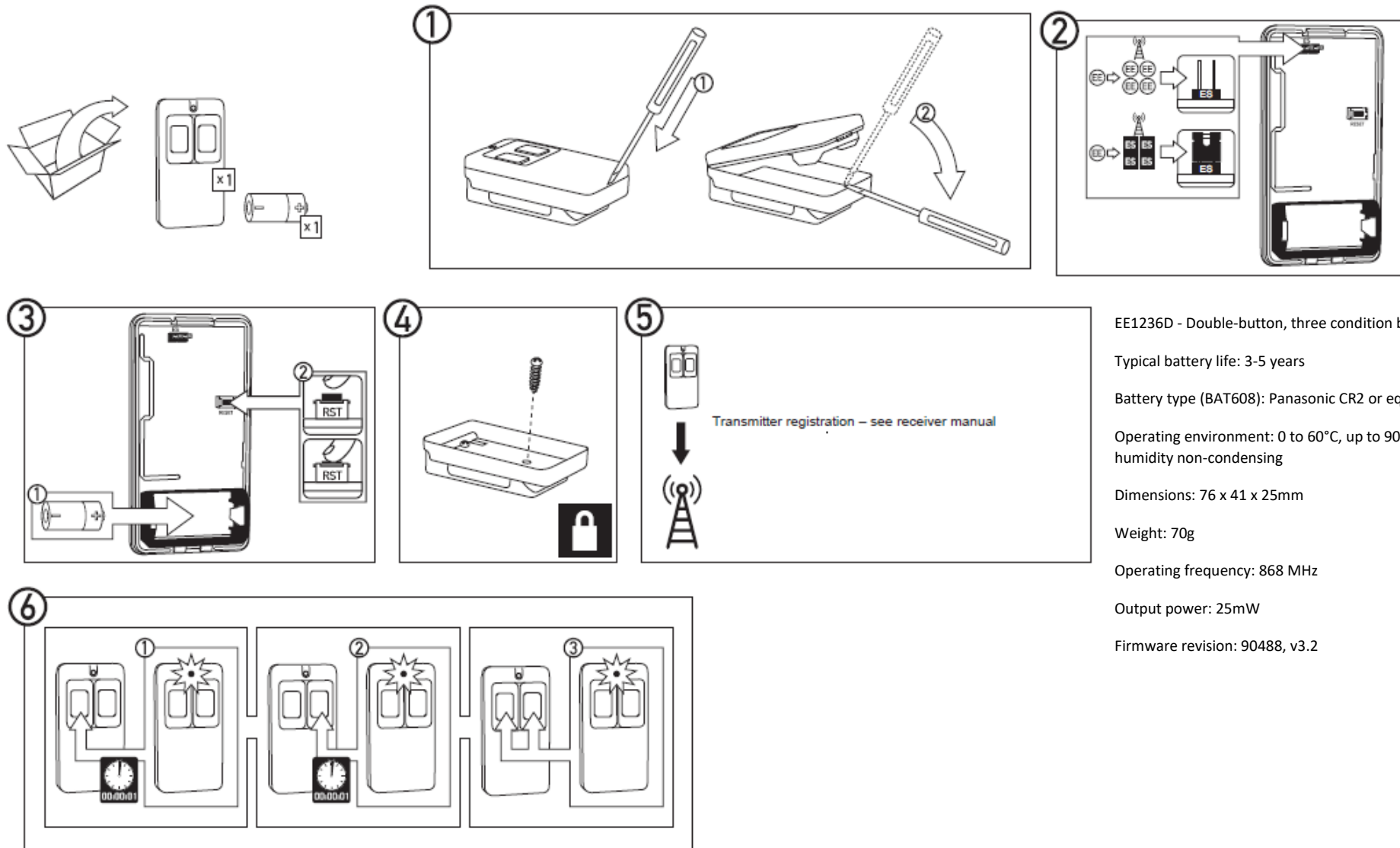


EE1236D



EE1236D - Double-button, three condition belt clip pendant

Typical battery life: 3-5 years

Battery type (BAT608): Panasonic CR2 or equivalent

Operating environment: 0 to 60°C, up to 90% relative humidity non-condensing

Dimensions: 76 x 41 x 25mm

Weight: 70g

Operating frequency: 868 MHz

Output power: 25mW

Firmware revision: 90488, v3.2